

The weather conditions in Northern Thailand

December 2020.

This year, the high pressure from China expanded to cover upper Thailand successively throughout the month and it had strong pressure. Along with westerly from Myanmar moved to cover this area on 7th-11th, caused upper Thailand had cold especially on 7th-11th and on 19th-24th which was the period that Thailand had general decrease in temperature and had cold in North. For mountain tops, it had cold to very cold and hail in some areas. But the averaged temperature for this month was higher than normal value of other zones. The averaged temperature for overall was higher than normal value 0.7°C. There was rarely reports of rain in upper Thailand for this month. However, the averaged monthly total rainfall for the whole country was 47% higher than normal value.

1st-10th of December

High pressure throughout covered upper Thailand and South China Sea. A another high pressure from China also came over to cover upper Thailand in mid-period. North was influenced by that together with westerly from Myanmar that moved to cover upper Thailand in the second half of period so it caused cool in the first half of period for upper Thailand. After that, the general temperature decreased to cold. For mountain top, it was cold to very cold. Minimum temperature was 0.9°C at Kew Mae Pan, Doi Inthanon National Park in Chiang Mai on 9th. There was report of frost at Doi Inthanon National Park on 6th. The most accumulative rainfall for upper Thailand is 1.5 mm measured at Mae Chan in Chiang Rai on 3rd.

11th-20th of December

There was general cool and cold in many areas due to high pressure that cover upper Thailand. Minimum temperature was 10°C at Um-phan in Tak on 11th. For mountain top, it was cold to very cold. Minimum temperature was 1.5°C at Kew Mae Pan, Doi Inthanon National Park in Chiang Mai on 11th. There was rarely reports of rain in upper Thailand for this period.

21st-31st of December

The weak high pressure covered upper Thailand and South China Sea in the beginning and middle of period. Then another strong high pressure from China moved to cover that areas. It caused cold in North. After that temperature increased but still had cool and cold in many areas. Minimum temperature was 8.2°C at Um-phang in Tak on 22nd. For mountain top, it was cold to very cold. Minimum temperature was 1°C at Kew Mae Pan in Chiang Mai on 23rd. There was report of frost at Ang-khang in Chiang Mai on 23rd. There was rarely reports of rain in upper Thailand for this period.

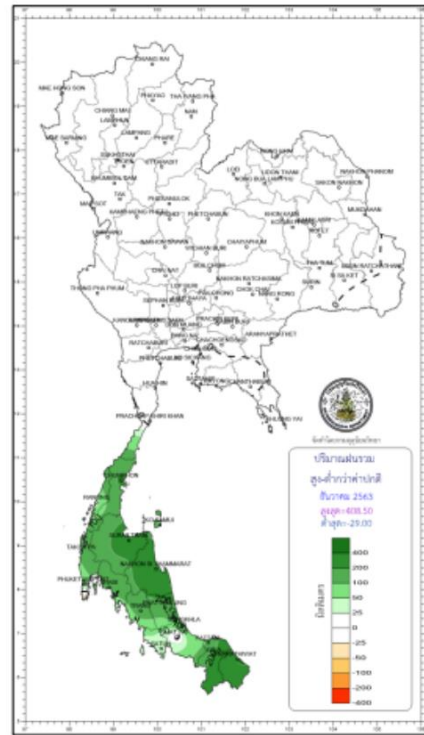
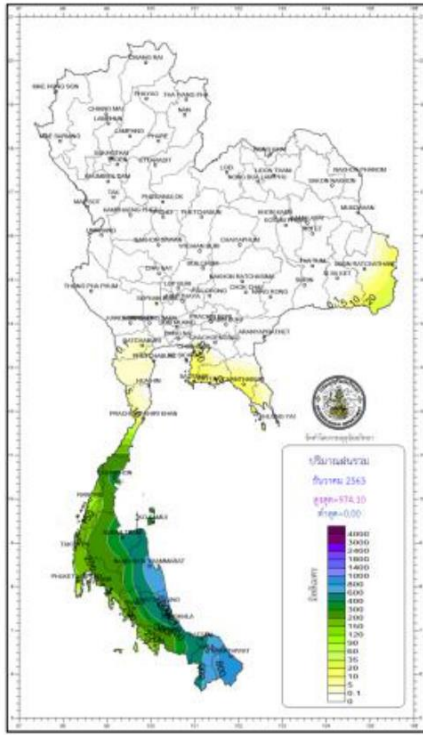
For North, there was average temperature was higher than normal values. Minimum temperature in this month was 8.2°C at Um-phang in Tak on 22nd. Minimum temperature at mountain top was 0.9°C at Kew Mae Pan, Doi Inthanon National Park in Chiang Mai on 9th. Maximum temperature was 36.8°C in Phetchabun on 28th.

Monthly Current Report
Rainfall and Accumulative Rainfall
December 2020

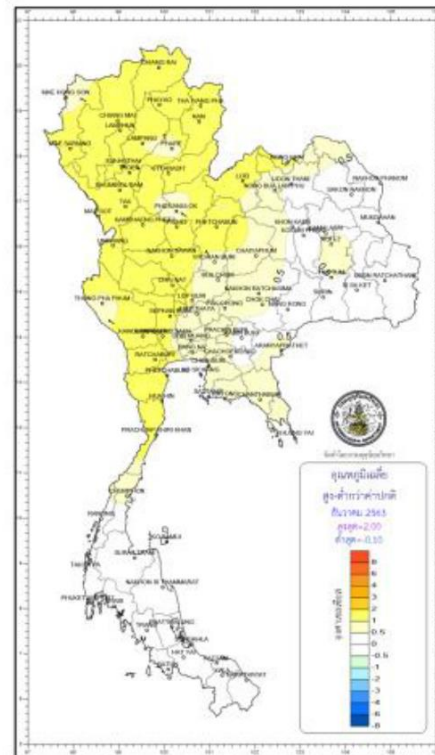
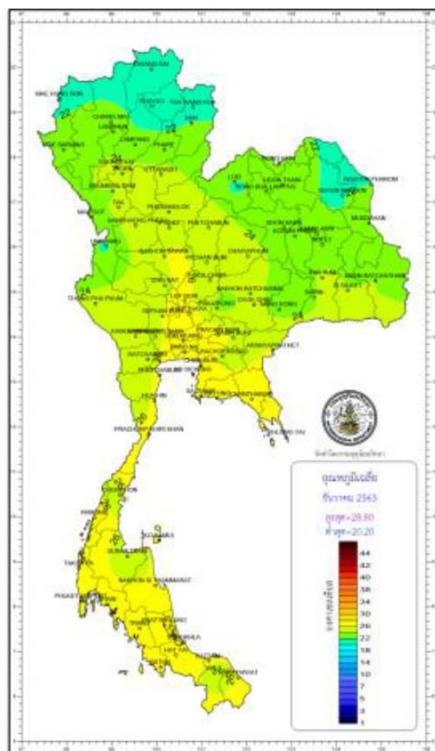
Northern Thailand

Station	Temperature (°c)		Rainfall (mm)		Accumulative rainfall (mm) Since 1 January	
	Mean	Above or below normal	Actual	Above or below normal	Actual	Above or below normal
Chiang Rai	20.7	1.3	0.0	-14.0	1198.5	-492.0
Mae Hong Son	21.5	0.6	0.0	-10.4	982.1	-310.3
Phayao	21.2	1.2	0.0	-10.9	811.9	-325.1
Chiang Mai	23.1	1.7	0.0	-15.9	1085.1	-45.5
Tha Wang Pha	21.7	1.2	0.0	-11.0	1194.7	-213.4
Nan	22.3	1.3	0.0	-8.6	1213.2	-20.9
Lamphun	22.5	1.2	0.0	-7.4	1061.8	58.0
Lampang	22.6	1.0	0.0	-7.0	951.4	-94.1
Mae Sariang	22.7	1.8	0.0	-7.6	736.4	-399.4
Phrae	22.7	0.9	0.0	-7.8	1370.9	256.1
Uttaradit	24.9	1.2	0.0	-5.0	1086.1	-285.5
Bhumibol Dam	23.9	1.2	0.0	-7.2	728.4	-315.0
Tak	24.2	1.2	0.0	-5.1	862.8	-198.3
Mae Sot	24.0	2.0	0.0	-5.9	892.5	-575.1
Umphang	21.6	1.8	0.0	-5.1	1328.6	-132.7
Phitsanulok	25.1	0.8	0.0	-11.1	1148.6	-168.4
Lom Sak	24.8	1.0	0.0	-4.5	1076.1	33.0
Phetchabun	25.4	1.9	0.0	-7.8	939.4	-194.0
Wichian Buri	25.4	0.6	0.0	-4.3	1175.8	-44.8
Kamphaeng Phet	25.3	1.2	0.0	-6.7	660.9	-643.7
Over the area	23.3	1.3	0.0	-8.2	1025.3	-205.6
				-100%		-17%

Picture 1 show the temperature and rain fall at northern part



Picture 2 show the total rain fall and total rain fall that lower than Normal value in December 2020



Picture 3 show the average maximum and minimum temperature in December 2020

Daily maximum temperature (°c) December 2020


station	December2020																														
	1	2	3	4	5	6	7	8	9	10	11	12	13	14	15	16	17	18	19	20	21	22	23	24	25	26	27	28	29	30	31
Mae hong son	30.2	29.9	30.0	30.1	29.7	28.6	29.2	28.5	28.2	28.3	28.2	28.0	28.9	28.9	29.6	30.2	30.3	31.0	30.1	30.6	28.0	26.8	27.3	27.0	28.4	30.5	30.9	30.1	29.2	28.7	29.0
Mae sariang	33.5	34.6	34.8	33.8	32.6	33.0	34.0	33.7	32.4	33.0	33.2	33.5	33.0	34.0	35.0	35.5	34.5	34.3	33.8	34.0	28.8	30.0	31.5	33.2	34.0	35.4	34.9	34.9	34.0	34.0	32.1
Chiang Rai	27.4	29.2	29.2	26.9	26.5	27.6	28.7	28.6	28.0	28.6	29.1	29.9	30.3	31.1	31.2	31.4	30.5	30.7	29.9	21.8	23.2	23.3	25.6	26.5	28.1	29.9	31.4	31.8	30.8	30.0	24.9
As. Chiang Rai	27.7	29.2	29.2	27.2	25.8	27.6	28.6	28.7	28.6	28.6	28.6	29.2	30.1	30.7	31.0	31.1	31.3	31.0	29.2	21.4	22.9	23.2	25.4	27.0	28.2	29.7	31.0	31.5	30.7	29.9	26.0
Phayao	29.3	30.2	29.2	29.0	27.4	28.4	29.3	29.2	29.0	29.8	29.7	30.2	31.8	31.5	32.3	31.6	32.2	31.2	30.5	24.5	24.8	24.7	27.8	28.6	28.8	30.9	32.4	32.5	32.6	30.2	30.0
Chiang Mai	31.0	31.3	31.0	30.3	29.0	29.3	30.5	29.8	30.0	30.5	30.4	30.6	31.4	32.0	32.5	32.5	32.1	31.0	30.4	26.8	26.5	25.5	28.3	29.5	30.5	31.7	32.5	33.2	32.3	32.5	29.7
Ang khang	18.0	18.0	19.3	17.6	17.7	16.3	17.8	18.5	19.0	17.8	22.3	23.4	23.6	21.5	22.1	22.1	21.5	19.0	19.1	14.9	9.7	14.2	16.0	16.9	22.4	22.4	24.0	23.8	23.0	21.0	16.8
Nan	31.1	31.8	31.3	28.7	27.8	29.4	29.5	30.2	29.6	30.4	30.5	31.3	32.2	32.7	32.8	32.8	32.0	32.5	30.9	26.4	26.5	27.3	30.0	30.2	31.4	32.4	33.4	33.8	35.1	31.9	29.4
As. Nan	29.2	30.1	29.4	27.0	27.0	28.0	28.5	29.8	29.0	30.1	29.7	30.4	31.0	31.2	31.0	30.6	30.5	29.8	30.5	26.0	26.5	26.2	28.1	28.9	29.7	32.0	32.4	32.4	32.6	30.6	28.0
Tha wang Pha	31.5	32.5	31.5	29.3	28.2	29.8	30.7	30.0	29.7	31.3	31.9	31.5	32.0	33.3	33.2	32.2	32.6	31.6	30.7	25.3	26.8	27.1	29.7	30.6	31.5	32.1	32.6	33.5	34.2	32.2	29.5
Thung Chang	30.5	31.9	30.8	29.2	29.0	30.0	29.7	29.7	29.5	31.2	31.0	31.0	31.0	32.1	32.0	31.5	31.6	30.5	30.0	25.0	28.0	27.0	29.8	30.7	31.3	31.7	32.3	32.8	33.3	30.0	27.8
Lamphun	30.4	31.1	30.8	30.3	29.0	29.5	30.3	30.3	30.2	30.2	30.8	31.4	32.0	32.7	33.2	33.1	32.7	31.4	30.6	27.4	26.0	26.3	28.0	29.8	30.6	32.6	33.8	34.6	33.0	32.6	30.2
Lampang	31.6	32.2	32.2	30.2	29.5	30.2	31.3	32.0	30.5	31.2	32.0	32.2	33.0	34.1	34.0	33.8	33.3	31.5	30.4	28.0	26.0	27.5	29.4	31.1	32.2	33.0	34.2	34.8	34.5	33.0	29.3
As. Lampang	28.8	29.8	29.0	29.0	27.3	28.0	28.5	28.5	28.4	29.0	29.0	30.0	30.6	31.0	31.5	31.2	30.0	29.7	29.4	26.8	24.0	25.0	27.0	28.6	29.5	31.8	32.7	33.4	32.5	31.8	31.0
Thoen	31.4	32.4	29.7	29.4	29.6	31.1	31.8	31.6	31.3	31.7	32.8	33.4	34.2	34.9	34.1	34.1	33.0	32.8	31.8	29.6	26.4	27.4	29.6	32.2	33.5	33.6	35.7	36.1	36.0	34.1	30.5
Phrae	31.5	32.8	31.2	29.9	29.2	30.8	31.4	31.1	30.6	31.0	31.8	32.3	33.1	33.9	33.7	33.0	32.8	31.8	31.0	29.0	27.0	27.4	30.1	31.4	33.0	31.7	33.8	34.0	34.5	32.8	30.2
Uttaradit	32.4	33.5	32.3	31.2	29.5	30.7	32.1	32.1	31.5	31.7	32.7	34.0	34.5	35.2	35.0	34.0	33.5	32.7	32.4	29.7	28.8	28.2	30.2	32.0	34.3	33.4	35.0	35.2	35.8	34.0	31.2
Sukhothai	31.6	32.8	30.3	29.9	29.0	30.0	30.6	31.5	31.5	31.0	32.0	33.5	34.5	35.2	33.4	33.5	33.0	32.8	32.0	30.3	29.0	28.3	30.3	31.8	32.6	32.6	34.6	35.3	35.3	33.5	30.7
Sukhothai	31.3	32.5	29.4	34.5	28.3	29.6	30.3	31.1	30.3	30.6	31.9	32.8	33.5	34.0	33.3	33.2	31.9	31.0	31.2	29.3	28.1	27.6	29.0	30.9	32.2	31.5	33.6	34.5	32.8	29.6	
The Bhumipol Dam	31.5	31.5	28.0	27.6	29.0	29.0	29.5	30.2	30.4	30.0	31.0	31.7	34.0	33.5	32.5	32.3	32.2	31.0	30.0	28.7	26.5	27.0	29.0	31.5	32.9	31.5	32.7	36.0	35.9	31.5	32.9
Tak	31.7	32.4	28.3	28.7	28.6	30.2	31.4	30.2	31.0	31.2	32.3	33.1	34.9	34.9	32.9	33.7	32.5	31.9	31.0	29.5	27.7	28.0	30.6	32.2	33.3	33.1	35.1	35.7	36.2	32.7	31.0
Mae Sot	31.0	32.4	31.7	30.0	30.0	30.4	30.8	31.0	31.8	31.5	32.8	32.8	33.3	33.5	34.3	34.2	33.6	33.7	31.0	29.5	28.0	28.6	31.5	32.5	34.3	34.0	33.7	35.0	34.3	34.2	31.2
Umphang	30.0	31.0	30.4	30.3	28.5	29.4	31.0	29.7	30.0	29.8	31.1	28.8	32.2	31.7	32.1	31.9	31.2	31.1	30.3	28.0	26.7	28.2	29.2	30.9	32.0	28.9	33.3	33.0	32.4	30.3	29.4
Doi Muser	23.9	24.5	22.5	22.0	20.7	22.6	23.1	23.5	23.9	23.5	24.9	26.7	27.4	27.4	26.1	26.0	25.5	25.2	23.0	21.5	20.4	20.0	23.4	24.8	25.7	26.5	27.5	29.1	28.5	25.6	22.2
Phitsanulok	32.0	32.8	30.5	30.0	29.0	29.5	31.1	31.0	31.0	31.2	32.3	33.0	34.2	35.1	33.9	34.0	33.0	32.9	31.8	30.5	28.6	28.0	29.4	31.1	32.3	32.5	34.1	34.8	34.9	33.2	30.2
Lom sak	32.1	32.3	30.8	29.2	28.4	30.7	31.3	31.0	31.1	31.8	34.0	33.8	35.2	36.0	33.8	33.0	32.9	31.4	30.5	28.8	28.0	28.5	31.3	33.4	32.6	33.0	35.0	35.6	35.5	32.0	28.8
Phetchabun	33.8	33.7	32.9	30.4	29.5	31.1	32.7	32.5	32.1	33.0	34.5	34.4	35.4	36.2	34.6	34.0	34.4	32.5	31.5	30.5	29.5	29.2	32.3	34.4	34.6	34.0	35.8	36.8	36.3	32.0	29.6
Wichian Buri	31.9	32.6	32.7	29.1	28.7	30.0	32.4	31.3	30.6	30.5	31.7	33.0	34.5	33.5	34.2	33.3	32.1	32.4	31.8	29.5	28.5	27.3	30.2	32.3	33.2	32.3	34.2	35.6	34.5	32.8	29.1
Kamphaeng Phe	31.5	32.6	28.9	28.5	28.5	30.0	31.1	30.7	30.7	31.0	32.9	33.5	34.2	34.2	33.7	32.8	32.3	31.8	31.2	29.1	28.2	28.7	30.8	32.7	33.0	33.0	34.3	35.2	36.0	33.1	29.4
As. Phichit	32.8	32.7	31.2	30.4	29.2	30.1	31.8	31.5	30.8	31.1	32.5	33.4	34.5	34.5	33.6	33.9	32.8	32.0	31.3	30.0	28.9	27.9	29.2	32.0	31.4	32.5	34.2	34.9	34.7	32.8	30.5


hot weather temperature from 35-39.9degree Celsius

hot weather temperature from 40 degree Celsius or more

Daily minimum temperature (°c) December 2020


station	December 2020																														
	1	2	3	4	5	6	7	8	9	10	11	12	13	14	15	16	17	18	19	20	21	22	23	24	25	26	27	28	29	30	31
Mae hong son	17.5	18.1	17.5	19.1	19.0	17.6	15.8	15.7	15.1	15.5	15.0	15.4	14.3	15.0	14.9	18.3	18.8	18.5	18.1	17.3	15.7	13.2	13.0	11.7	11.4	14.8	17.6	16.2	13.9	11.4	14.0
Mae sariang	18.0	15.5	17.2	17.0	17.5	14.0	14.6	13.0	13.6	12.5	14.0	11.5	14.0	13.0	15.5	17.0	18.0	15.5	16.3	15.0	15.0	10.5	11.0	9.7	11.0	17.5	17.0	17.0	13.2	10.0	14.0
Chiang Rai	13.2	13.4	15.4	19.1	17.6	15.2	13.0	14.2	13.7	13.6	12.5	12.5	12.9	13.8	15.0	16.0	17.4	16.7	17.8	17.1	14.2	10.7	9.0	10.0	10.3	12.8	15.0	15.0	13.0	11.1	15.0
As. Chiang Rai	12.6	13.0	15.0	19.7	17.4	15.6	13.8	13.6	12.6	12.9	12.2	13.1	13.7	14.4	15.6	17.4	16.6	18.6	15.6	14.7	9.2	8.6	8.9	9.7	12.0	14.6	14.6	12.3	10.4	13.6	
Phayao	14.4	14.2	15.3	19.4	16.5	15.5	14.3	12.8	12.1	12.3	12.2	10.9	12.6	13.6	15.2	16.8	16.5	17.9	19.8	14.8	11.7	9.4	9.2	9.2	10.2	13.8	16.0	16.8	12.8	12.2	15.8
Chiang Mai	18.1	17.9	19.5	21.8	20.8	17.3	17.0	16.3	15.6	15.5	15.4	14.6	16.2	17.2	18.4	19.0	19.7	19.5	20.5	17.8	18.6	14.5	12.6	13.0	13.6	18.0	18.9	18.3	15.6	14.4	18.0
Ang khang	12.2	13.0	13.8	14.3	15.2	11.7	13.4	13.1	13.5	13.0	13.0	13.6	14.5	14.6	15.9	16.2	16.8	16.1	14.7	12.9	8.5	6.4	8.4	10.0	9.8	14.7	15.7	15.0	13.9	15.0	13.0
Nan	15.8	17.2	18.6	19.0	14.8	14.3	14.6	14.1	14.6	14.0	14.1	13.6	14.4	15.5	16.6	17.6	17.0	17.4	15.8	15.6	14.1	12.0	10.4	11.0	12.9	18.0	17.6	18.2	17.5	14.0	19.5
As. Nan	14.3	15.3	18.0	17.2	13.7	13.5	14.2	12.5	13.0	13.2	13.5	12.4	13.0	14.2	15.1	16.7	16.2	16.0	14.8	15.0	11.0	9.5	9.5	9.8	11.8	16.7	17.1	17.0	16.3	12.5	17.5
Tha wang Pha	14.8	15.8	17.3	18.0	16.3	14.2	14.6	13.7	13.8	13.6	14.3	12.0	12.5	14.7	15.2	15.6	16.6	16.4	15.0	16.3	11.5	10.0	9.6	9.7	10.5	15.7	16.6	16.8	16.7	12.9	19.1
Thung Chang	14.1	15.6	16.0	16.0	15.0	13.8	13.5	13.1	13.7	12.5	13.7	11.5	11.5	13.5	14.4	15.5	16.0	15.2	14.5	15.0	13.5	11.8	9.5	10.0	10.5	14.2	15.5	16.1	15.5	12.5	17.0
Lamphun	17.5	17.4	19.0	20.7	19.8	16.0	15.4	15.1	14.5	14.2	14.0	13.9	15.4	16.4	17.6	18.7	18.9	18.0	18.1	16.5	15.6	12.8	11.2	11.9	12.4	18.3	18.2	18.0	14.6	13.1	18.1
Lampang	16.4	16.6	18.7	18.8	16.5	14.7	14.4	14.0	13.7	13.0	13.4	12.8	14.9	16.4	17.3	18.2	18.0	17.8	17.2	15.3	14.7	11.4	9.3	11.3	12.2	18.0	18.0	18.5	16.0	13.2	18.0
As. Lampang	16.0	15.7	18.5	18.5	17.0	14.5	14.2	14.0	13.0	13.2	13.0	12.8	15.0	16.5	17.5	17.8	18.2	18.0	17.2	15.0	13.2	11.0	10.4	11.5	12.6	18.5	18.2	18.7	14.6	12.5	17.0
Thoen	17.9	18.2	19.7	18.5	15.8	14.5	14.1	14.4	14.1	13.7	13.4	14.2	16.2	18.1	19.0	19.3	18.5	18.6	18.2	16.8	15.9	13.3	10.7	12.1	14.5	17.9	18.7	19.7	16.7	14.0	19.3
Phrae	18.5	18.7	19.8	18.9	16.0	14.6	14.7	14.5	14.0	13.8	15.0	14.8	16.5	17.5	18.3	19.0	18.2	18.8	17.4	15.6	14.8	12.4	11.5	11.8	14.3	20.1	18.5	18.5	18.3	14.7	18.6
Uttaradit	20.6	22.0	23.4	20.0	18.2	15.5	17.0	17.5	17.2	16.4	17.2	18.9	19.6	21.3	21.5	22.0	20.5	21.2	20.4	18.5	17.3	17.2	16.5	17.5	20.0	23.2	20.6	21.5	22.0	20.5	21.8
Sukhothai	20.0	20.8	23.5	20.3	17.6	16.4	16.2	17.3	17.4	15.8	16.4	17.9	19.4	20.8	22.5	21.5	20.8	21.2	19.8	18.8	17.9	16.4	14.4	15.5	17.8	20.8	20.5	21.3	21.1	18.9	21.6
Sukhothai	20.8	21.8	23.6	19.9	17.5	17.2	16.6	17.9	18.2	16.5	17.8	18.8	20.3	21.3	21.4	22.2	20.9	21.8	20.2	19.2	17.6	16.9	15.4	16.4	19.0	22.0	21.0	21.3	20.9	19.9	20.5
The Bhumipol Dam	19.3	20.5	21.0	19.7	18.9	15.5	16.0	16.3	17.0	16.0	16.0	18.0	19.6	23.0	21.0	21.3	19.4	19.0	19.5	16.5	19.7	15.0	13.0	16.4	18.7	20.0	19.5	21.0	21.0	19.0	21.0
Tak	19.9	21.7	22.4	20.4	18.2	15.5	15.6	16.3	16.6	15.5	15.3	16.9	18.6	22.0	21.8	21.7	20.1	19.0	20.1	18.2	18.3	16.9	13.7	16.2	17.0	19.5	19.9	20.4	19.0	16.3	21.2
Mae Sot	18.5	20.3	19.3	19.0	16.0	14.2	13.8	15.2	15.0	14.5	14.5	15.4	17.2	18.5	19.8	21.0	18.4	18.2	17.7	17.0	16.8	12.2	12.2	13.5	15.3	18.3	18.8	18.5	18.0	15.4	20.2
Umphang	15.2	17.0	18.9	15.0	18.0	10.7	10.4	11.3	10.5	11.8	10.0	13.8	16.7	17.3	16.5	16.3	15.8	14.5	14.4	13.7	10.5	8.2	9.0	10.0	13.4	14.2	16.0	16.2	15.6	12.4	15.2
Doi Muser	17.2	16.0	16.5	16.5	14.7	12.2	10.8	12.2	11.7	11.1	10.6	12.4	13.7	16.1	16.3	16.7	15.9	14.6	14.9	15.4	14.0	12.4	9.2	10.6	13.6	15.0	15.2	15.0	15.2	12.0	15.5
Phitsanulok	20.5	21.2	24.4	19.8	18.1	15.9	16.6	17.8	19.0	16.8	16.5	18.5	20.5	21.6	22.8	22.0	20.6	20.2	20.4	19.5	16.8	15.8	14.9	16.5	19.2	20.4	21.0	21.5	20.2	20.4	20.0
Lom sak	20.4	20.5	22.7	20.0	17.1	15.3	15.8	18.5	16.8	15.0	16.0	18.8	20.2	21.2	22.8	22.3	20.3	20.5	20.5	18.0	15.9	14.2	14.4	17.4	20.1	20.3	21.0	21.7	20.7	20.3	17.7
Phetchabun	21.6	21.6	22.3	20.5	18.0	15.6	15.9	19.0	17.0	15.0	16.4	18.9	20.6	21.0	21.4	22.0	20.3	20.4	20.5	19.3	16.8	14.5	14.7	16.5	19.6	20.5	20.8	21.5	19.9	20.9	18.6
Wichian Buri	21.4	23.1	23.8	21.8	19.3	16.4	17.5	19.1	17.7	16.5	16.3	20.6	22.9	22.5	22.5	22.0	20.8	20.4	19.6	19.2	17.1	15.1	15.7	18.0	20.1	21.0	22.3	20.7	21.6	23.3	18.6
Kamphaeng Phe	21.2	21.5	24.0	21.3	18.6	16.2	16.1	18.2	19.4	16.8	16.1	18.3	20.0	22.9	22.7	23.1	21.8	20.2	21.3	21.8	19.5	17.2	14.7	17.2	19.3	20.3	20.5	21.2	21.0	19.8	21.6
As. Phichit	21.5	23.0	23.9	20.8	18.6	17.5	18.5	19.8	21.1	18.6	18.8	20.0	22.7	22.8	24.2	23.4	22.5	21.4	21.5	22.0	18.5	17.0	16.5	18.4	20.0	21.5	21.8	22.8	21.9	22.0	19.4


 cool weather temperature 8-15.9 degree Celsius

 cold weather temperature from 7.9 degree Celsius or more

Daily rainfall (mm.) December 2020

station	December 2020																															
	1	2	3	4	5	6	7	8	9	10	11	12	13	14	15	16	17	18	19	20	21	22	23	24	25	26	27	28	29	30	31	
Mae hong son	0.0	0.0	0.0	0.0	0.0	0.0	0.0	0.0	0.0	0.0	0.0	0.0	0.0	0.0	0.0	0.0	0.0	0.0	0.0	0.0	0.0	0.0	0.0	0.0	0.0	0.0	0.0	0.0	0.0	0.0	0.0	0.0
Mae sariang	0.0	0.0	0.0	0.0	0.0	0.0	0.0	0.0	0.0	0.0	0.0	0.0	0.0	0.0	0.0	0.0	0.0	0.0	0.0	0.0	0.0	0.0	0.0	0.0	0.0	0.0	0.0	0.0	0.0	0.0	0.0	0.0
Chiang Rai	0.0	0.0	0.0	0.0	0.0	0.0	0.0	0.0	0.0	0.0	0.0	0.0	0.0	0.0	0.0	0.0	0.0	0.0	0.0	0.0	0.0	0.0	0.0	0.0	0.0	0.0	0.0	0.0	0.0	0.0	0.0	0.0
As. Chiang Rai	0.0	0.0	0.0	0.0	0.0	0.0	0.0	0.0	0.0	0.0	0.0	0.0	0.0	0.0	0.0	0.0	0.0	0.0	0.0	0.0	0.0	0.0	0.0	0.0	0.0	0.0	0.0	0.0	0.0	0.0	0.0	0.0
Phayao	0.0	0.0	0.0	0.0	0.0	0.0	0.0	0.0	0.0	0.0	0.0	0.0	0.0	0.0	0.0	0.0	0.0	0.0	0.0	0.0	0.0	0.0	0.0	0.0	0.0	0.0	0.0	0.0	0.0	0.0	0.0	0.0
Chiang Mai	0.0	0.0	0.0	0.0	0.0	0.0	0.0	0.0	0.0	0.0	0.0	0.0	0.0	0.0	0.0	0.0	0.0	0.0	0.0	0.0	0.0	0.0	0.0	0.0	0.0	0.0	0.0	0.0	0.0	0.0	0.0	0.0
Ang khang	0.0	0.0	0.0	0.0	0.0	0.0	0.0	0.0	0.0	0.0	0.0	0.0	0.0	0.0	0.0	0.0	0.0	0.0	0.0	0.0	0.0	0.0	0.0	0.0	0.0	0.0	0.0	0.0	0.0	0.0	0.0	0.0
Nan	0.0	0.0	0.0	0.0	0.0	0.0	0.0	0.0	0.0	0.0	0.0	0.0	0.0	0.0	0.0	0.0	0.0	0.0	0.0	0.0	0.0	0.0	0.0	0.0	0.0	0.0	0.0	0.0	0.0	0.0	0.0	0.0
As. Nan	0.0	0.0	0.0	0.0	0.0	0.0	0.0	0.0	0.0	0.0	0.0	0.0	0.0	0.0	0.0	0.0	0.0	0.0	0.0	0.0	0.0	0.0	0.0	0.0	0.0	0.0	0.0	0.0	0.0	0.0	0.0	0.0
Tha wang Pha	0.0	0.0	0.0	0.0	0.0	0.0	0.0	0.0	0.0	0.0	0.0	0.0	0.0	0.0	0.0	0.0	0.0	0.0	0.0	0.0	0.0	0.0	0.0	0.0	0.0	0.0	0.0	0.0	0.0	0.0	0.0	0.0
Thung Chang	0.0	0.0	0.0	0.0	0.0	0.0	0.0	0.0	0.0	0.0	0.0	0.0	0.0	0.0	0.0	0.0	0.0	0.0	0.0	0.0	0.0	0.0	0.0	0.0	0.0	0.0	0.0	0.0	0.0	0.0	0.0	0.0
Lamphun	0.0	0.0	0.0	0.0	0.0	0.0	0.0	0.0	0.0	0.0	0.0	0.0	0.0	0.0	0.0	0.0	0.0	0.0	0.0	0.0	0.0	0.0	0.0	0.0	0.0	0.0	0.0	0.0	0.0	0.0	0.0	0.0
Lampang	0.0	0.0	0.0	0.0	0.0	0.0	0.0	0.0	0.0	0.0	0.0	0.0	0.0	0.0	0.0	0.0	0.0	0.0	0.0	0.0	0.0	0.0	0.0	0.0	0.0	0.0	0.0	0.0	0.0	0.0	0.0	0.0
As. Lampang	0.0	0.0	0.0	0.0	0.0	0.0	0.0	0.0	0.0	0.0	0.0	0.0	0.0	0.0	0.0	0.0	0.0	0.0	0.0	0.0	0.0	0.0	0.0	0.0	0.0	0.0	0.0	0.0	0.0	0.0	0.0	0.0
Thoen	0.0	0.0	0.0	0.0	0.0	0.0	0.0	0.0	0.0	0.0	0.0	0.0	0.0	0.0	0.0	0.0	0.0	0.0	0.0	0.0	0.0	0.0	0.0	0.0	0.0	0.0	0.0	0.0	0.0	0.0	0.0	0.0
Phrae	0.0	0.0	0.0	0.0	0.0	0.0	0.0	0.0	0.0	0.0	0.0	0.0	0.0	0.0	0.0	0.0	0.0	0.0	0.0	0.0	0.0	0.0	0.0	0.0	0.0	0.0	0.0	0.0	0.0	0.0	0.0	0.0
Uttaradit	0.0	0.0	0.0	0.0	0.0	0.0	0.0	0.0	0.0	0.0	0.0	0.0	0.0	0.0	0.0	0.0	0.0	0.0	0.0	0.0	0.0	0.0	0.0	0.0	0.0	0.0	0.0	0.0	0.0	0.0	0.0	0.0
Sukhothai	0.0	0.0	0.0	0.0	0.0	0.0	0.0	0.0	0.0	0.0	0.0	0.0	0.0	0.0	0.0	0.0	0.0	0.0	0.0	0.0	0.0	0.0	0.0	0.0	0.0	0.0	0.0	0.0	0.0	0.0	0.0	0.0
Sukhothai	0.0	0.0	0.0	0.0	0.0	0.0	0.0	0.0	0.0	0.0	0.0	0.0	0.0	0.0	0.0	0.0	0.0	0.0	0.0	0.0	0.0	0.0	0.0	0.0	0.0	0.0	0.0	0.0	0.0	0.0	0.0	0.0
The Bhumipol Dam	0.0	0.0	0.0	0.0	0.0	0.0	0.0	0.0	0.0	0.0	0.0	0.0	0.0	0.0	0.0	0.0	0.0	0.0	0.0	0.0	0.0	0.0	0.0	0.0	0.0	0.0	0.0	0.0	0.0	0.0	0.0	0.0
Tak	0.0	0.0	0.0	0.0	0.0	0.0	0.0	0.0	0.0	0.0	0.0	0.0	0.0	0.0	0.0	0.0	0.0	0.0	0.0	0.0	0.0	0.0	0.0	0.0	0.0	0.0	0.0	0.0	0.0	0.0	0.0	0.0
Mae Sot	0.0	0.0	0.0	0.0	0.0	0.0	0.0	0.0	0.0	0.0	0.0	0.0	0.0	0.0	0.0	0.0	0.0	0.0	0.0	0.0	0.0	0.0	0.0	0.0	0.0	0.0	0.0	0.0	0.0	0.0	0.0	0.0
Umphang	0.0	0.0	0.0	0.0	0.0	0.0	0.0	0.0	0.0	0.0	0.0	0.0	0.0	0.0	0.0	0.0	0.0	0.0	0.0	0.0	0.0	0.0	0.0	0.0	0.0	0.0	0.0	0.0	0.0	0.0	0.0	0.0
Doi Muser	0.0	0.0	0.0	0.0	0.0	0.0	0.0	0.0	0.0	0.0	0.0	0.0	0.0	0.0	0.0	0.0	0.0	0.0	0.0	0.0	0.0	0.0	0.0	0.0	0.0	0.0	0.0	0.0	0.0	0.0	0.0	0.0
Phitsanulok	0.0	0.0	0.0	0.0	0.0	0.0	0.0	0.0	0.0	0.0	0.0	0.0	0.0	0.0	0.0	0.0	0.0	0.0	0.0	0.0	0.0	0.0	0.0	0.0	0.0	0.0	0.0	0.0	0.0	0.0	0.0	0.0
Lom sak	0.0	0.0	0.0	0.0	0.0	0.0	0.0	0.0	0.0	0.0	0.0	0.0	0.0	0.0	0.0	0.0	0.0	0.0	0.0	0.0	0.0	0.0	0.0	0.0	0.0	0.0	0.0	0.0	0.0	0.0	0.0	0.0
Phetchabun	0.0	0.0	0.0	0.0	0.0	0.0	0.0	0.0	0.0	0.0	0.0	0.0	0.0	0.0	0.0	0.0	0.0	0.0	0.0	0.0	0.0	0.0	0.0	0.0	0.0	0.0	0.0	0.0	0.0	0.0	0.0	0.0
Wichian Buri	0.0	0.0	0.0	0.0	0.0	0.0	0.0	0.0	0.0	0.0	0.0	0.0	0.0	0.0	0.0	0.0	0.0	0.0	0.0	0.0	0.0	0.0	0.0	0.0	0.0	0.0	0.0	0.0	0.0	0.0	0.0	0.0
Kamphaeng Phe	0.0	0.0	0.0	0.0	0.0	0.0	0.0	0.0	0.0	0.0	0.0	0.0	0.0	0.0	0.0	0.0	0.0	0.0	0.0	0.0	0.0	0.0	0.0	0.0	0.0	0.0	0.0	0.0	0.0	0.0	0.0	0.0
As. Phichit	0.0	0.0	0.0	0.0	0.0	0.0	0.0	0.0	0.0	0.0	0.0	0.0	0.0	0.0	0.0	0.0	0.0	0.0	0.0	0.0	0.0	0.0	0.0	0.0	0.0	0.0	0.0	0.0	0.0	0.0	0.0	0.0

 Rain fall from 35.1-90 mm.

 heavy rain fall from 90.1mm. or more