

Monthly Weather Summary in Northern

October 2020

Thailand's weather in October 2020 was dominated by the monsoon trough laying across the upper Thailand in most of the month and moved southwards to lie over the center southern part during the end of the month coupled with the moderate to active southwest monsoon prevailed over the Andaman Sea, Thailand and the Gulf of Thailand. Moreover there were 5 tropical cyclones having some effects of rainfall on Thailand, the tropical depression over the central South China Sea moved through Vietnam and Cambodia and dissipated over the upper Gulf of Thailand during beginning of the month. During middle of the month, the tropical storm "LINFA (2015)" and "NANGKA (2016)" which dissipated over Laos associated with the tropical depression in the central South China Sea that moved into disintegration in Cambodia after that the typhoon "SAUDEL (2017)" over the central China Sea moved into dissipation in Laos during the end of the month furthermore the typhoon "MOLAVE (2018)" which entered Thailand on 29th October as tropical depression strength then it downgraded into the active low pressure cell and dissipated on the next time. These conditions brought abundant rainfall in majority areas of Thailand and flash floods was reported in several places. Monthly rainfall was above normal in most parts of Thailand. Meanwhile the high pressure area from China extended its ridge to cover upper Thailand since the end of the month and the replenishment of the southwest monsoon prevailing over upper Thailand changed to the northeast monsoon during the mentioned period. These caused rainfall and decreasing temperature especially in Northern. For this year the beginning of the 2020 winter season was 22th October .

1st-10th October : The monsoon trough laying across lower Northern in first half of period then it moved southward to lie across lower Central, upper Southern and Eastern parts toward the central China Sea almost the period accompanied with the strengthening of the moderate southwest monsoon prevailing over the Andaman Sea, Thailand and the Gulf of Thailand during the second half of the period due to the influence of the low pressure cell in central China Sea intensified into a tropical depression at 07:00 P.M. on 6th October and degenerated into the active low pressure cell and later moved through Cambodia and moved into the Gulf of Thailand on the next time. These caused abundant rainfall. The highest daily rainfall in upper Thailand was 244.4 millimeters.

11th-20th October : The monsoon trough laying across lower Central, upper Southern and Eastern parts throughout the period toward the low pressure cell over Laos, the coast of Vietnam and Cambodia, respectively accompanied with the active southwest monsoon prevailed over the Andaman Sea, Thailand and the Gulf of Thailand almost the period. Besides, under the influence of the tropical storm "LINFA(2015)" in the central South China Sea made landfall over Quang Ngai, Vietnam at 10.00 A.M. on 11th October and downgraded into the tropical depression on the next time after that degenerated into the active low pressure cell covering Attapu,

Loas on 12th October. Together with the tropical storm “NANGKA(2016)” in upper the South China Sea moved through the Hainan Island into the Gulf of Tonkin and made landfall over Ninh Binh, Vietnam at 04.00 P.M. on 14th October. It weakened into a tropical depression at Thanh Hoa, Vietnam at 07.00 P.M. before weakening into the active low pressure cell covering Hua Phan, Laos on 15th October. In addition, the tropical depression in the central South China Sea made landfall over central Vietnam at 01.00 A.M. on 17th October and degenerated into an area of low pressure covering Cambodia on 18th October. These conditions caused abundant rainfall over upper Thailand almost the period especially fairly widespread rain with heavy rainfall in several areas. The heaviest daily rainfall in upper Thailand was 176.3 millimeters.

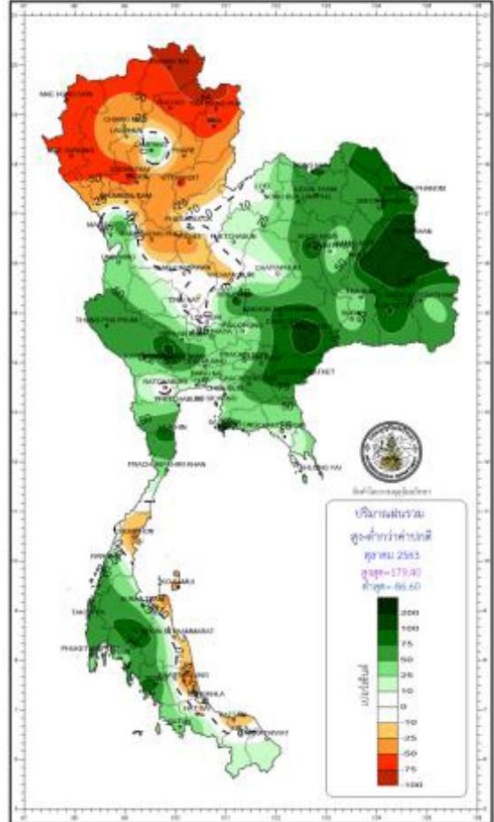
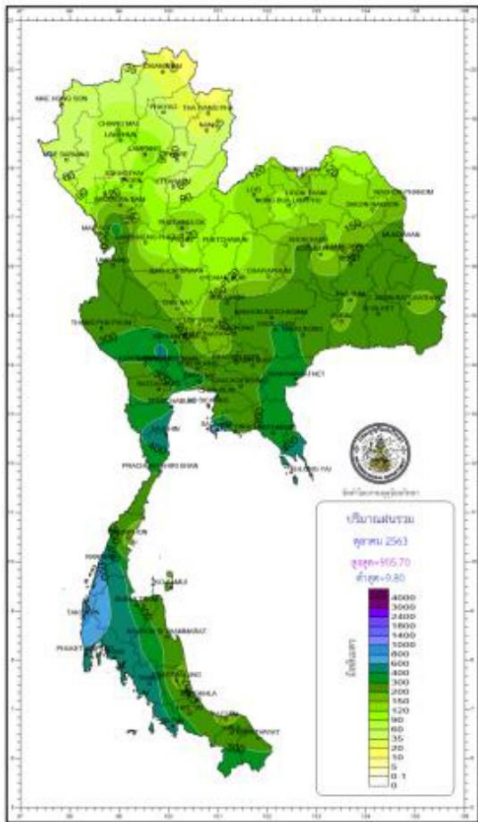
21st-31st October : The ridge of high pressure areas from China covered to upper Thailand during the beginning and middle of the period after that another high pressure extended its ridge to cover northern brought temperature was decreased over upper Thailand with cool weather especially in Northern. Moreover there were 2 tropical cyclones having some effects on Thailand, the typhoon “SAUDEL (2017)” in the middle South China Sea making landfall over Vietnam as tropical depression strength in the morning of 26th October. It moved to Laos and dissipated in afternoon of the same day. Accompanied with the typhoon “MOLAVE (2018)” which hit over Quang Ngai, Vietnam at 10.00 A.M. on 28th October and downgraded into tropical storm over Quang Nam, Vietnam then it moved through Laos and downgraded into tropical depression before entering Thailand. These conditions caused isolated to scattered rain over upper Thailand during the first half of the period and later increasing in rainfall with fairly widespread to widespread rain with heavy to very heavy rainfall in some areas and the heaviest daily rainfall in upper Thailand was 108.5 millimeters on 28th October. The minimum temperature was 7.5 °C over the area of mountaintops at Doi Inthanon, Chom Thong in Chiang Mai province on 26th November. For rainfall, there was higher than normal in other parts of Thailand except North which 27.2 millimeters lower than normal.

Monthly Current Report
Rainfall and Accumulative Rainfall
October 2020

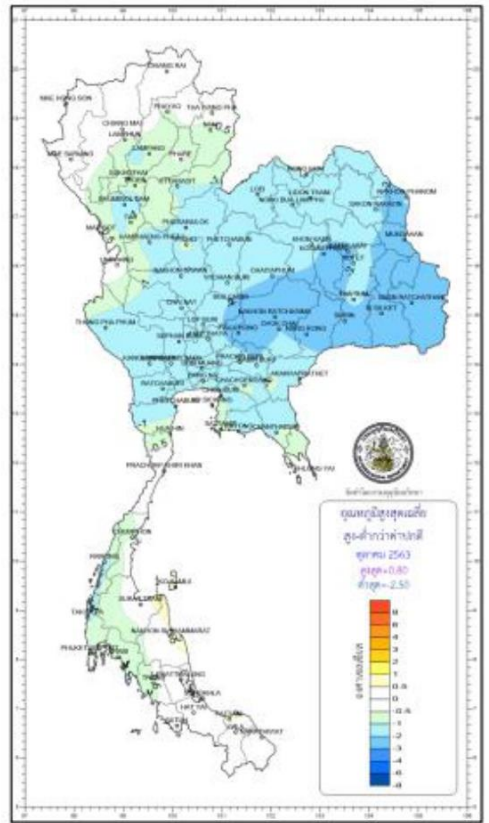
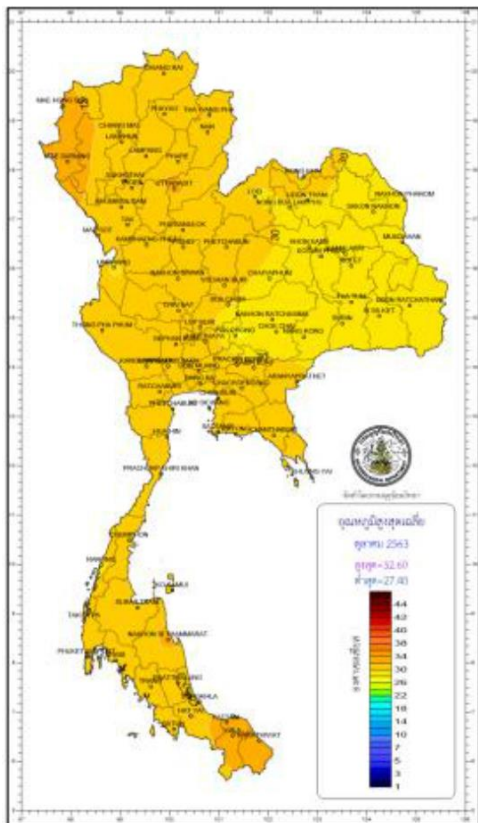
Northern Thailand

Station	Temperature (°c)		Rainfall (mm)		Accumulative rainfall (mm) Since 1 January	
	Mean	Above or below normal	Actual	Above or below normal	Actual	Above or below normal
Chiang Rai	25.7	0.6	25.1	-99.8	1179.9	-437.4
Mae Hong Son	27.0	0.6	33.7	-80.8	950.9	-286.2
Phayao	25.5	0.2	43.6	-79.0	772.6	-316.2
Chiang Mai	26.9	0.8	95.1	-22.5	1083.0	22.2
Tha Wang Pha	26.3	0.5	37.6	-45.8	1194.6	-174.9
Nan	26.7	0.3	29.7	-40.6	1203.7	-3.7
Lamphun	26.3	0.2	100.2	-9.9	1050.4	98.1
Lampang	26.4	0.1	158.4	60.1	951.0	-58.0
Mae Sariang	26.9	0.8	35.7	-79.5	700.1	-406.0
Phrae	26.8	0.3	54.0	-34.8	1368.2	286.8
Uttaradit	27.6	-0.1	48.1	-62.9	1086.1	-253.8
Bhumibol Dam	26.3	-0.1	164.9	-39.4	728.0	-263.4
Tak	26.7	-0.1	183.8	-15.4	861.1	-140.3
Mae Sot	26.8	0.7	96.6	-5.5	892.3	-545.7
Umphang	24.9	1.0	227.3	71.5	1327.8	-103.2
Phitsanulok	27.1	-0.7	179.9	17.4	1147.1	-125.4
Lom Sak	26.4	-0.4	110.8	22.3	1075.9	51.2
Phetchabun	26.5	-0.3	105.1	14.7	938.1	-175.9
Wichian Buri	26.5	-1.2	112.0	-19.6	1170.4	-25.6
Kamphaeng Phet	27.1	-0.1	97.2	-94.5	630.3	-625.6
Over the area	26.5	0.1	96.9	-27.2 -22%	1015.6	-174.2 -15%

Picture 1 show the temperature and rain fall at northern part




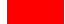
Picture 2 show the total rain fall and total rain fall that lower than Normal value in October 2020



Picture 3 show the average maximum and minimum temperature in October 2020

Maximum temperature (°c) October 2020

Station	October 2020																														
	1	2	3	4	5	6	7	8	9	10	11	12	13	14	15	16	17	18	19	20	21	22	23	24	25	26	27	28	29	30	31
Mae hong son	33.2	32.7	32.3	32.0	33.6	31.2	34.7	34.9	31.5	32.5	34.5	34.4	32.2	33.1	33.6	33.5	31.5	32.5	29.4	30.0	31.7	30.0	31.0	31.5	32.7	34.8	30.7	31.7	32.6	29.3	31.3
Mae sariang	34.0	33.0	32.0	33.5	32.5	34.5	35.0	30.6	31.5	30.8	34.1	35.2	30.5	34.4	33.0	33.5	31.0	29.8	30.0	32.0	31.7	34.0	32.2	34.3	35.0	36.5	29.0	32.8	31.0	29.1	32.9
Chiang Rai	33.3	33.4	33.6	33.0	32.2	32.1	33.0	31.3	31.2	30.9	31.6	31.7	31.8	33.5	29.2	30.7	28.4	28.4	25.6	23.2	26.6	29.3	30.8	30.8	30.6	32.7	31.0	32.4	28.0	25.6	30.3
As. Chiang Rai	32.5	33.0	32.7	32.0	32.3	32.0	33.0	32.0	31.0	30.6	31.6	31.4	31.0	32.5	28.6	30.2	27.7	28.0	25.1	23.5	26.1	28.5	30.5	30.1	31.0	32.5	30.8	32.0	28.0	25.4	30.0
Phayao	33.5	32.0	32.0	31.8	31.2	32.6	33.0	30.5	30.2	31.3	33.0	32.9	31.9	33.0	29.0	30.0	29.5	28.9	23.5	23.0	25.5	28.0	30.1	30.8	31.1	32.7	28.6	31.7	27.8	24.6	30.5
Chiang Mai	34.5	34.4	31.6	32.5	34.3	33.3	34.8	32.6	31.2	32.5	34.2	34.6	34.5	34.5	30.8	32.8	29.4	30.2	25.0	25.7	27.9	29.5	31.7	32.5	33.0	34.6	30.1	33.0	31.0	27.5	31.6
Ang khang	21.5	21.2	22.7	21.9	21.7	20.4	23.3	23.0	20.1	19.0	23.3	21.0	21.7	24.0	20.1	20.0	18.0	17.3	15.7	15.3	16.5	17.7	18.1	21.0	24.5	23.9	18.5	21.2	19.9	16.6	18.6
Nan	35.0	33.4	34.7	34.1	32.0	34.0	34.4	30.5	31.7	31.8	34.1	33.3	33.9	34.1	30.0	31.2	30.4	29.0	27.5	26.6	30.4	32.0	31.3	32.2	33.2	32.4	33.6	33.2	28.7	24.7	30.0
As. Nan	32.9	32.0	32.2	33.5	31.6	32.5	33.8	30.1	30.0	30.6	32.3	31.8	32.9	32.6	29.9	30.2	28.5	28.6	27.2	26.0	29.6	30.2	30.1	32.4	32.3	32.0	31.2	31.5	28.5	24.6	29.3
Tha wang Pha	35.0	34.5	34.6	34.0	33.3	34.3	35.1	30.3	32.1	32.7	34.8	33.8	34.7	34.8	31.0	31.4	29.4	31.5	27.5	26.5	30.4	32.4	32.6	32.3	32.7	32.4	33.7	33.3	29.0	26.3	31.4
Thung Chang	33.0	33.5	33.8	34.1	33.0	33.8	34.0	31.8	32.2	32.0	33.5	33.5	33.9	34.0	29.5	29.4	28.0	27.7	28.5	26.0	30.8	31.9	32.5	33.0	32.4	32.5	33.2	32.7	29.7	26.5	30.0
Lamphun	34.2	34.4	29.0	32.5	34.3	32.0	34.4	31.2	30.8	31.9	34.1	33.0	33.4	34.0	29.5	31.7	29.1	29.6	23.6	25.6	28.0	29.2	29.5	31.4	32.6	33.2	29.1	31.6	30.0	27.0	32.0
Lampang	35.2	35.0	30.2	32.3	34.0	32.7	34.3	31.0	31.3	32.5	34.9	34.2	34.3	33.8	32.7	32.3	31.2	29.0	24.8	24.6	28.8	30.0	30.5	31.8	33.3	33.0	31.0	33.3	29.5	27.3	31.6
As. Lampang	33.5	32.5	29.2	30.7	31.0	31.0	32.7	29.0	29.0	31.0	32.2	32.0	33.2	32.0	30.5	30.5	29.8	26.0	23.6	24.0	27.5	28.5	28.6	31.0	30.5	30.5	28.6	30.5	29.0	26.0	29.8
Thoen	34.2	34.2	30.5	31.7	31.2	33.6	34.7	31.0	30.3	31.3	33.9	33.8	33.2	33.9	32.8	31.1	29.8	28.3	24.5	26.4	28.3	29.3	29.2	30.9	33.4	34.2	28.3	32.9	28.2	27.3	32.4
Phrae	34.5	34.0	30.7	32.3	32.5	34.7	34.5	30.5	30.5	31.0	34.5	34.1	34.0	34.8	32.1	33.0	30.3	28.2	25.6	26.1	29.7	31.0	31.4	32.9	33.7	33.5	32.6	33.9	27.5	28.6	33.0
Uttaradit	34.8	34.3	30.3	33.8	32.6	35.0	35.0	30.4	31.8	32.5	34.3	34.5	33.0	35.0	33.0	33.5	30.8	26.8	26.2	27.5	30.8	34.4	32.6	32.5	33.0	32.8	32.5	33.5	28.2	30.7	33.0
Sukhothai	34.1	35.0	31.3	32.7	32.8	35.0	35.3	30.4	30.8	32.1	33.8	34.0	32.5	33.1	34.1	31.5	30.3	26.4	27.1	28.0	30.5	31.2	31.8	31.5	33.0	32.9	30.2	33.5	28.4	30.0	33.1
Sukhothai	33.5	34.8	31.2	32.2	32.2	34.6	34.3	30.1	30.0	31.5	33.5	32.9	32.5	32.6	33.6	31.5	29.7	26.2	26.9	26.8	30.0	31.5	31.5	31.4	32.0	32.8	30.3	32.9	27.8	30.0	32.2
Bhumipol Dam	34.5	34.0	35.0	33.0	32.0	32.0	34.4	29.2	30.0	34.0	32.8	33.5	31.0	33.5	34.0	29.4	30.0	26.0	24.7	25.6	28.0	27.5	27.2	28.7	32.0	32.8	27.5	33.7	30.0	26.5	29.4
Tak	34.5	34.6	34.4	32.8	32.8	33.0	34.2	29.5	29.3	29.2	32.0	33.2	32.5	34.2	33.8	29.6	29.4	25.5	25.7	25.6	27.6	28.5	30.0	31.3	32.7	33.6	28.3	32.9	31.1	28.1	28.7
Mae Sot	33.5	33.8	31.2	32.8	33.0	33.5	35.2	29.4	29.5	30.0	33.2	34.3	32.3	33.5	35.0	30.0	30.5	27.8	29.0	30.3	31.5	31.5	32.7	32.6	33.5	33.0	31.4	32.8	31.0	32.0	31.7
Umphang	31.5	31.5	29.3	32.2	31.0	31.6	32.2	26.9	26.2	26.4	30.7	31.9	28.7	31.2	31.6	28.9	26.3	26.6	26.4	30.5	29.7	29.7	30.8	31.8	30.8	32.0	29.8	29.8	27.8	30.0	30.5
Doi Muser	26.2	27.7	25.0	26.5	26.9	27.2	28.3	22.1	21.6	22.2	26.4	27.0	26.4	26.8	28.6	24.1	23.0	20.0	20.5	20.2	21.4	23.8	25.0	25.0	26.1	26.7	21.9	26.1	26.1	23.5	24.5
Phitsanulok	33.9	33.9	30.4	33.4	31.1	33.6	34.0	29.4	30.0	31.0	32.4	32.6	31.2	32.3	33.7	30.3	29.7	29.8	27.4	27.5	29.5	30.7	30.4	31.4	31.6	30.0	29.4	32.5	27.1	30.0	32.6
Lom sak	33.2	34.3	30.5	33.5	31.8	35.0	34.2	27.5	29.2	29.8	33.5	31.5	30.8	33.3	33.4	30.2	30.0	25.6	25.7	28.1	29.5	32.3	31.9	32.2	33.0	31.5	31.2	34.3	26.0	29.5	29.3
Phetchabun	34.1	34.9	31.7	34.6	31.3	35.0	34.0	26.0	28.8	30.9	32.2	31.4	30.2	33.6	32.9	30.3	28.8	25.5	27.0	28.6	29.2	32.9	33.0	32.5	33.7	26.7	30.7	34.5	25.7	30.3	31.3
Wichian Buri	33.5	33.8	32.3	33.8	31.1	34.5	34.5	27.5	29.0	29.7	30.1	30.4	28.6	31.2	32.7	29.0	27.7	24.1	28.5	27.7	29.2	31.3	31.8	32.1	33.8	32.2	28.9	31.9	25.4	31.7	32.8
Kamphaeng Phe	34.4	34.7	32.0	33.1	32.7	34.5	35.0	29.0	27.5	29.4	32.6	33.5	31.5	34.4	34.9	29.5	28.7	25.3	26.0	27.2	28.0	30.8	29.2	31.7	32.4	32.1	28.7	32.7	29.6	29.7	30.3
As. Phichit	33.6	33.7	32.6	33.1	32.1	34.3	34.0	28.2	30.2	30.4	32.4	33.0	31.0	32.4	33.5	31.2	28.4	25.6	27.2	27.5	30.5	31.1	31.7	31.7	32.5	29.6	29.3	32.9	27.0	30.8	33.2

 hot weather temperature from 35-39.9degree Celsius
 hot weather temperature from 40 degree Celsius or more

Daily minimum temperature (°c) October 2020

station	October 2020																														
	1	2	3	4	5	6	7	8	9	10	11	12	13	14	15	16	17	18	19	20	21	22	23	24	25	26	27	28	29	30	31
Mae hong son	24.3	24.4	24.5	24.7	24.2	24.6	24.3	23.5	23.8	21.5	22.0	22.0	21.2	22.0	23.9	23.8	24.3	22.9	23.6	22.7	22.4	23.3	22.9	23.0	21.9	21.8	22.0	21.6	21.1	23.4	23.1
Mae sariang	23.5	24.5	23.8	24.8	23.0	24.5	24.0	24.5	23.0	22.5	22.0	23.0	22.0	23.5	23.5	24.5	24.0	23.0	23.0	22.2	22.5	23.2	23.0	23.2	21.0	23.2	23.0	22.0	22.0	23.5	22.0
Chiang Rai	24.3	24.3	24.3	24.5	24.0	23.3	23.3	22.5	22.5	20.1	20.4	19.3	21.0	20.5	23.5	22.0	23.5	22.6	20.1	19.5	20.3	20.8	20.7	17.5	17.3	18.8	22.4	21.4	21.3	23.0	21.5
As. Chiang Rai	23.5	23.5	23.8	23.7	23.3	23.4	22.8	21.0	22.1	19.7	19.8	18.5	19.0	19.3	22.7	22.4	21.5	22.0	20.2	19.6	20.0	21.4	21.4	16.5	16.4	18.0	22.0	21.0	20.6	22.5	21.3
Phayao	23.8	24.0	24.0	24.4	23.8	24.2	23.0	23.0	23.0	20.1	20.5	20.6	21.8	22.5	23.7	23.0	22.1	22.2	21.0	20.0	20.0	21.0	21.1	18.0	18.1	18.3	23.0	22.0	22.0	22.4	21.9
Chiang Mai	24.9	24.7	25.2	24.9	23.9	24.7	24.1	24.4	26.9	23.4	22.4	23.0	24.4	23.5	25.5	24.0	23.8	25.7	22.9	21.9	21.5	23.2	23.7	22.2	21.9	21.9	23.0	22.0	22.9	22.0	21.8
Ang khang	18.0	18.2	18.1	17.5	18.3	18.5	18.4	17.7	17.0	16.1	15.9	16.5	17.1	18.4	19.1	16.9	15.0	16.0	15.2	13.5	14.6	14.9	15.8	15.8	15.5	18.0	16.3	16.3	18.4	15.5	15.8
Nan	24.9	24.8	25.4	24.1	24.8	23.5	23.8	24.0	23.0	22.1	21.6	21.6	23.3	22.6	24.8	24.0	23.0	22.2	22.4	22.4	22.0	22.6	21.8	20.5	19.1	20.2	23.5	23.3	23.1	23.5	22.2
As. Nan	24.2	24.3	24.4	24.0	24.5	23.3	22.9	22.9	21.9	21.0	20.5	20.0	22.8	21.6	24.0	23.7	22.8	21.4	21.4	21.7	21.5	22.2	20.3	19.2	18.5	18.9	22.7	23.4	22.4	22.7	21.5
Tha wang Pha	25.0	24.5	24.7	24.7	25.0	23.6	23.5	23.5	22.6	21.7	21.3	20.2	22.6	21.8	24.5	24.0	23.0	21.6	21.5	22.0	21.8	22.4	20.7	18.4	18.0	19.0	23.3	23.2	22.6	22.8	21.8
Thung Chang	23.0	23.0	23.5	23.3	23.2	22.2	22.8	22.0	22.5	20.4	19.5	19.5	20.5	21.2	23.9	23.0	22.2	22.5	20.5	20.5	20.0	21.0	18.5	15.9	16.5	17.5	19.5	20.4	21.6	23.1	20.0
Lamphun	25.2	25.0	25.2	25.0	24.0	24.6	24.4	24.4	25.1	23.4	22.1	22.2	24.1	22.8	25.0	25.0	23.4	23.8	22.2	21.5	21.3	23.0	23.6	22.1	21.8	21.6	22.8	22.5	22.5	22.2	22.5
Lampang	24.7	24.5	25.2	24.5	24.0	25.0	23.5	24.6	24.4	23.0	21.4	21.4	24.5	23.2	24.4	25.0	23.9	23.2	22.0	21.4	21.0	23.2	23.4	22.3	20.5	20.0	22.2	21.7	23.0	22.2	22.5
As. Lampang	24.0	24.5	25.0	23.0	23.5	24.5	23.2	24.0	24.0	22.0	21.0	21.0	23.0	22.0	23.6	24.0	23.5	23.0	22.5	20.7	21.4	22.5	23.3	21.6	20.0	19.8	22.5	21.5	22.2	22.0	22.5
Thoen	23.5	24.5	25.2	24.3	24.3	24.4	24.5	24.5	24.7	23.8	22.6	23.2	24.2	23.0	24.0	25.1	24.2	23.9	22.1	22.2	22.3	23.7	23.8	23.3	21.5	21.0	23.4	22.3	23.2	22.8	23.1
Phrae	25.5	25.8	25.0	25.4	24.8	25.2	24.9	25.9	24.5	23.2	23.1	24.5	24.2	24.4	25.3	25.2	24.6	23.3	22.8	21.9	22.5	23.8	24.1	23.3	21.4	21.9	23.5	23.1	24.5	23.0	23.2
Uttaradit	25.5	26.6	26.6	26.1	24.9	25.6	25.4	26.0	25.5	24.8	23.5	24.8	24.9	25.4	26.2	26.3	25.8	24.5	23.5	23.2	23.5	24.0	25.0	23.7	22.3	22.9	24.6	24.0	26.1	24.0	24.4
Sukhothai	24.7	25.4	23.8	24.7	24.3	26.0	26.2	24.0	23.5	24.8	24.4	24.5	25.4	24.2	25.4	25.2	24.8	24.3	22.8	22.3	23.0	23.8	25.0	24.3	22.4	22.5	23.5	24.4	25.0	23.3	23.9
Sukhothai	24.4	26.4	24.5	24.5	24.5	26.0	25.6	24.9	25.5	25.0	24.2	24.5	25.4	24.5	26.0	25.4	25.0	24.5	22.9	23.1	23.0	24.1	25.0	24.4	22.9	22.9	24.4	24.1	25.5	23.3	24.0
Bhumipol Dam	23.7	24.2	25.7	24.0	24.0	24.7	24.8	23.5	24.7	24.0	24.0	23.5	23.5	24.5	24.9	24.8	23.8	23.0	22.0	22.5	22.0	23.0	22.5	22.7	22.0	22.5	23.8	23.4	24.5	22.0	23.5
Tak	24.5	24.9	25.5	24.2	24.3	25.6	24.9	25.4	24.3	23.3	24.5	23.8	23.8	24.2	26.7	25.6	24.4	23.3	22.0	22.3	22.5	23.2	23.6	23.9	22.3	22.0	24.5	23.4	24.5	23.0	24.1
Mae Sot	23.0	22.5	23.2	23.4	23.3	23.5	23.3	23.2	23.5	23.0	22.8	22.4	22.4	23.5	23.3	23.3	23.0	22.5	21.5	21.7	22.4	22.3	22.7	22.4	21.5	22.0	23.7	21.0	22.5	22.0	22.8
Umphang	22.1	21.5	21.0	22.2	22.3	22.5	22.3	22.0	21.2	20.8	21.3	20.5	21.4	21.4	22.2	22.4	22.0	21.6	21.5	20.6	21.2	21.1	19.2	18.1	21.0	21.0	19.0	19.6	20.1	20.8	22.0
Doi Muser	19.6	20.3	19.7	19.5	19.8	19.0	18.8	19.9	19.0	18.5	19.7	17.6	20.2	19.4	20.5	20.5	20.2	18.4	17.8	17.9	18.2	19.0	18.2	19.0	17.1	16.0	19.2	17.4	18.7	19.0	20.3
Phitsanulok	25.3	25.4	23.8	24.8	23.5	25.2	25.0	23.4	24.6	23.9	22.6	23.7	24.5	24.4	25.3	24.9	24.5	23.4	22.7	22.6	23.0	23.7	23.9	23.0	22.1	23.0	24.0	24.0	24.9	22.6	24.1
Lom sak	24.7	24.5	24.5	24.3	23.6	24.7	24.0	23.0	24.2	22.9	22.6	23.6	23.5	25.0	25.6	24.0	24.3	22.0	22.5	22.0	22.5	22.5	22.7	20.3	19.5	21.8	23.2	22.4	23.6	22.8	24.2
Phetchabun	24.7	25.3	24.4	25.4	24.2	24.5	24.4	23.0	23.9	23.3	22.5	23.0	23.5	24.5	25.3	24.6	24.1	21.7	22.6	22.6	22.2	23.2	22.5	20.5	20.4	22.0	23.0	22.4	23.5	22.9	23.4
Wichian Buri	25.6	25.0	24.7	25.2	25.3	25.7	25.3	23.3	23.9	23.5	23.8	22.8	23.8	24.5	25.7	24.7	24.9	22.8	22.5	23.2	22.7	23.9	23.3	21.5	21.4	22.9	23.6	23.5	24.8	23.5	24.8
Kamphaeng Phe	24.4	25.5	25.3	25.0	24.7	25.5	25.0	24.5	24.2	24.0	24.5	23.7	25.1	24.7	24.8	25.3	24.9	23.7	22.4	22.4	22.8	24.0	24.1	23.4	22.8	22.4	24.5	23.8	25.1	23.2	24.4
As. Phichit	25.2	25.8	24.9	25.2	24.8	26.5	26.1	24.2	24.9	25.3	24.9	24.5	25.4	25.2	25.8	25.9	25.4	23.8	22.8	23.7	23.7	24.6	25.5	23.9	23.4	23.7	24.6	24.0	25.5	23.5	24.4

cool weather temperature 8-15.9 degree Celsius

cold weather temperature from 7.9 degree Celsius or more

daily rainfall (mm) October 2020

station	October 2020																														
	1	2	3	4	5	6	7	8	9	10	11	12	13	14	15	16	17	18	19	20	21	22	23	24	25	26	27	28	29	30	31
Mae hong son	0.6	0.0	0.2	17.3	1.2	9.1	0.0	0.1	0.0	0.0	0.0	0.0	0.0	0.0	0.7	0.0	T	0.0	T	0.0	0.0	T	0.0	0.0	0.0	0.0	T	4.3	0.0	0.2	0.0
Mae sariang	0.0	0.0	0.0	29.3	0.0	0.0	0.0	0.5	0.0	0.0	0.0	0.0	0.0	0.0	0.0	1.4	0.0	0.4	0.0	0.0	0.0	0.0	0.0	0.0	0.0	1.5	1.5	0.0	1.1	0.0	0.0
Chiang Rai	0.2	4.6	0.0	0.0	2.8	0.0	0.0	0.0	0.0	0.0	0.0	0.0	0.3	0.0	0.0	0.0	8.1	2.0	1.3	0.7	0.0	0.0	0.0	0.0	0.0	0.0	0.0	1.9	3.2	0.0	
As. Chiang Rai	0.0	4.6	0.2	0.0	2.2	0.0	0.0	0.0	0.0	0.0	0.0	0.0	0.0	0.0	0.6	6.2	0.0	0.0	7.4	2.0	2.8	T	0.0	0.0	0.0	0.0	0.0	3.4	2.8	0.0	
Phayao	0.0	0.2	1.9	0.0	0.0	0.0	0.0	0.0	0.0	0.0	0.0	0.0	0.0	1.9	6.0	0.0	3.2	8.9	12.6	0.9	0.0	0.0	0.0	0.0	0.0	1.6	0.0	3.3	3.1	0.0	
Chiang Mai	25.0	T	T	5.8	1.7	1.3	2.4	0.0	0.0	0.0	0.0	0.0	0.0	0.4	22.3	0.0	0.2	1.4	0.2	0.8	0.0	0.0	0.0	0.0	20.6	1.1	0.0	8.5	3.4	0.0	
Ang khang	0.0	0.0	0.0	6.2	7.7	14.8	0.0	0.0	0.0	0.0	0.0	0.0	0.0	3.8	11.0	0.0	0.0	6.8	2.5	0.0	0.0	0.0	0.0	0.0	0.0	0.0	0.0	2.8	27.4	0.0	
Nan	0.0	0.0	2.2	0.2	0.0	0.0	0.0	0.0	0.0	0.0	0.0	0.0	0.0	0.5	1.6	0.0	0.2	0.0	T	0.0	0.0	0.0	0.0	0.0	4.4	10.1	0.0	2.0	8.0	0.5	
As. Nan	T	T	0.9	0.4	0.0	0.0	0.0	0.0	0.0	0.0	0.0	0.0	0.0	0.0	1.0	0.0	0.0	0.0	0.0	0.2	0.0	0.0	0.0	0.0	1.2	1.4	T	0.3	4.4	T	
Tha wang Pha	11.7	0.0	0.3	0.0	0.0	1.3	0.0	0.0	0.0	0.0	0.0	0.0	0.0	0.0	12.2	0.0	0.2	0.4	0.3	0.0	0.0	0.0	0.0	0.0	0.0	0.0	0.5	0.9	1.7	8.1	
Thung Chang	0.0	0.0	0.0	0.0	2.4	1.6	0.0	0.0	0.0	0.0	0.0	0.0	0.3	0.0	3.0	0.0	0.4	0.0	0.0	0.0	0.0	0.0	0.0	0.0	0.6	0.8	T	0.2	1.2	0.0	
Lamphun	0.0	2.0	2.2	6.4	0.0	2.8	0.0	0.0	0.0	0.0	0.0	0.0	0.0	0.2	40.4	0.0	1.9	7.2	0.4	2.9	0.0	T	0.0	0.0	23.3	0.4	0.0	9.2	0.9	0.0	
Lampang	0.0	0.8	5.1	0.0	0.0	22.7	0.2	0.0	0.0	0.0	0.0	0.0	0.0	0.0	17.2	0.0	7.4	12.3	2.0	0.0	0.0	1.6	0.0	0.0	21.8	0.0	0.0	22.2	45.1	0.0	
As. Lampang	0.0	0.0	4.2	0.0	0.0	0.0	0.0	0.0	0.0	0.0	0.4	0.0	0.0	9.3	4.6	0.0	5.7	4.2	0.2	0.2	0.0	0.2	0.0	16.8	0.0	0.0	17.0	5.6	T		
Thoen	0.0	8.7	14.1	19.5	3.3	7.0	8.8	0.8	0.0	0.5	0.0	0.0	0.0	0.0	10.2	T	5.3	0.8	0.2	0.0	3.0	2.7	0.0	5.0	0.4	0.0	13.0	10.2	0.7		
Phrae	0.0	3.6	7.5	0.7	T	0.0	T	T	T	0.0	0.0	0.5	0.0	0.0	T	1.4	0.7	3.7	4.0	0.2	T	0.0	0.0	0.0	7.2	1.2	0.0	19.8	3.5	0.0	
Uttaradit	0.0	T	3.2	0.0	T	0.0	0.5	0.8	0.0	T	0.0	9.7	0.0	0.0	0.0	3.5	0.5	11.2	1.6	T	0.0	0.0	0.0	0.0	4.6	0.0	0.0	11.9	0.6	0.0	
Sukhothai	0.0	1.7	8.3	31.4	0.0	0.0	1.9	1.1	0.0	0.0	0.0	0.0	0.0	2.1	2.1	0.9	3.4	0.2	0.0	0.0	0.0	1.1	0.0	0.0	0.5	0.1	0.0	18.7	7.4	0.4	
Sukhothai	0.0	9.1	35.5	6.5	0.0	0.0	3.8	1.0	0.0	0.9	0.0	0.0	0.0	5.7	7.7	0.2	3.9	0.5	0.0	0.0	0.0	0.5	0.0	0.0	0.0	0.2	T	18.3	12.7	0.0	
Bhumipol Dam	1.5	0.0	4.0	12.4	0.0	5.0	10.0	1.7	0.0	5.0	0.0	13.5	0.0	0.0	13.7	28.9	0.0	19.1	2.9	0.0	4.5	4.8	0.7	0.0	T	3.3	0.0	23.7	9.3	0.9	
Tak	0.0	0.0	4.4	34.2	0.0	27.8	2.0	1.4	1.0	2.2	0.0	0.6	0.0	0.0	3.8	34.4	0.8	26.8	4.8	1.2	8.2	0.8	0.0	0.0	0.0	1.2	0.0	13.4	5.2	9.6	
Mae Sot	0.0	0.0	19.9	3.0	0.0	9.2	5.0	6.6	0.0	0.0	0.0	0.0	0.0	23.0	13.4	0.5	1.3	0.0	0.0	0.0	0.0	0.0	0.0	0.0	0.0	0.0	0.0	3.3	6.2	5.2	
Umphang	33.5	0.0	42.0	0.0	0.0	1.2	21.2	22.0	0.8	0.0	0.0	T	0.0	3.8	35.2	21.8	4.1	3.4	0.2	0.0	0.0	0.0	0.0	1.0	0.0	0.4	0.0	13.6	0.0	23.1	
Doi Muser	3.0	0.2	17.7	28.6	0.0	3.2	15.1	14.3	7.0	5.4	0.1	0.0	0.0	2.7	40.3	56.4	34.0	45.1	18.5	8.0	4.9	8.0	0.3	0.0	0.2	3.9	0.0	39.7	9.2	11.4	
Phitsanulok	0.0	52.3	2.8	60.8	0.0	0.0	2.9	0.2	2.4	0.2	1.9	0.2	0.0	0.0	3.8	11.2	0.4	6.0	0.0	0.0	0.1	0.0	3.3	0.0	0.6	0.0	0.7	20.0	10.1	0.0	
Lom sak	1.6	6.7	11.0	19.5	0.0	0.0	5.6	0.3	1.0	0.0	0.0	1.2	0.1	0.0	6.1	23.4	4.9	0.4	1.2	0.0	0.0	0.0	0.0	0.0	1.2	0.0	7.6	19.0	0.0	0.0	
Phetchabun	2.0	6.0	1.2	13.8	T	0.0	6.3	8.0	0.4	0.0	0.0	1.5	0.0	0.0	1.2	18.6	8.2	4.3	0.0	0.0	0.0	0.0	0.0	0.0	1.5	0.0	12.8	13.0	0.0	6.3	
Wichian Buri	0.2	20.2	0.0	0.0	0.0	0.2	6.0	4.7	1.8	0.0	0.0	4.2	T	0.0	3.4	27.3	3.4	5.2	T	0.4	0.0	0.0	0.0	0.0	3.8	3.1	10.1	18.0	0.0	0.0	
Kamphaeng Phe	0.0	4.2	7.0	6.0	0.0	0.0	9.9	1.1	0.7	0.0	10.2	0.2	T	0.0	0.8	25.8	2.1	7.8	2.5	1.1	0.0	3.4	0.5	0.0	0.0	0.0	T	4.0	0.6	9.3	
As. Phichit	0.0	13.8	6.4	9.1	0.0	0.0	1.4	0.2	0.0	0.0	0.0	0.1	0.6	7.0	4.8	7.2	4.0	7.7	0.7	0.0	0.8	0.1	0.0	0.0	1.7	0.4	1.3	9.3	0.0	0.0	

Rain fall from 35.1-90 mm.

heavy rain fall from 90.1mm. or more